

207± ACRE LAND FOR SALE | \$5,000,000 (\$24,154/AC)

STRYD FARMS

5080 16TH AVENUE, HANFORD CA 93230



PROPERTY DESCRIPTION

Opportunity to purchase 207± assessed acres located in Hanford California. Subject property borders the east side of the Kings River, with existing water rights to annually pull 487± acres off the Kings River.

PROPERTY INFORMATION

PLANTINGS Property is currently planted to Mature Walnuts

WATER Kings River Water Association:

- Existing water rights off of the Kings River
- "1" lift pump off the Kings River

Wells:

- 4 agricultural deep wells

LEGAL Zoning: AG20

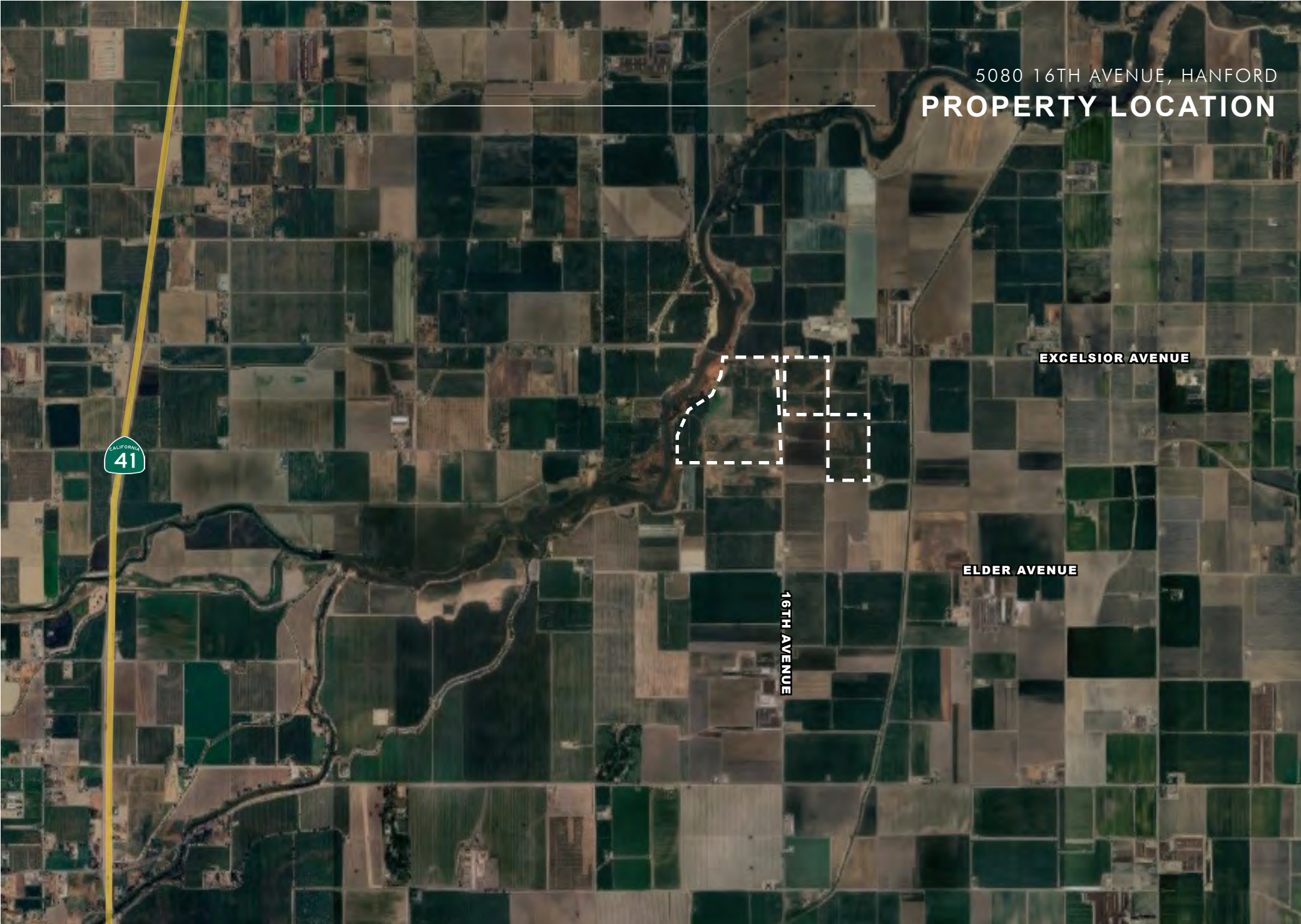
APN Kings County APNs:

- 004-080-080
- 004-080-081
- 004-080-082
- 006-010-005
- 006-010-038
- 006-010-068

SOIL 50% Nord (Grade 1)
50% Whitewolf (Grade 2)

BUILDING Subject property contains a 4,300± SF shop for storage

5080 16TH AVENUE, HANFORD
PROPERTY LOCATION



EXCELSIOR AVENUE

ELDER AVENUE

16TH AVENUE



BRANDON LAMONICA
Senior Vice President - Office Division
t 559-930-1221
blamonica@fortuneassociates.com
CA RE Lic. #01317857

COLE MONTGOMERY
Vice President - Agricultural Division
t 209-541-7088
cmontgomery@fortuneassociates.com
CA RE Lic. #02107074

www.fortuneassociates.com | 470 E Herndon Ave, Suite 200 | 559.490.2500

All information, representations and projections indicated in this brochure are based on information supplied by the owner or sources deemed reliable and are not warranted by FORTUNE ASSOCIATES. DRE 02210729



5080 16TH AVENUE, HANFORD
WELL LOCATIONS

EXCELSIOR AVENUE

Well #3



Well #1



1

3

S



4,300 SQFT Shop

2

River Pump



P



Well #2

Well #4



4

16TH AVENUE

P



S



1



3



2



4



5080 16TH AVENUE, HANFORD

CONTACT

Exclusively Offered By

BRANDON LAMONICA

blamonica@fortuneassociates.com

559-930-1221

DRE#01317857

COLE MONTGOMERY

cmontgomery@fortuneassociates.com

209-541-7088

DRE#02107074